



NALFA Product Certification Matrix

Thank you for your interest in the NALFA LF-01 and Surface Swell certifications.

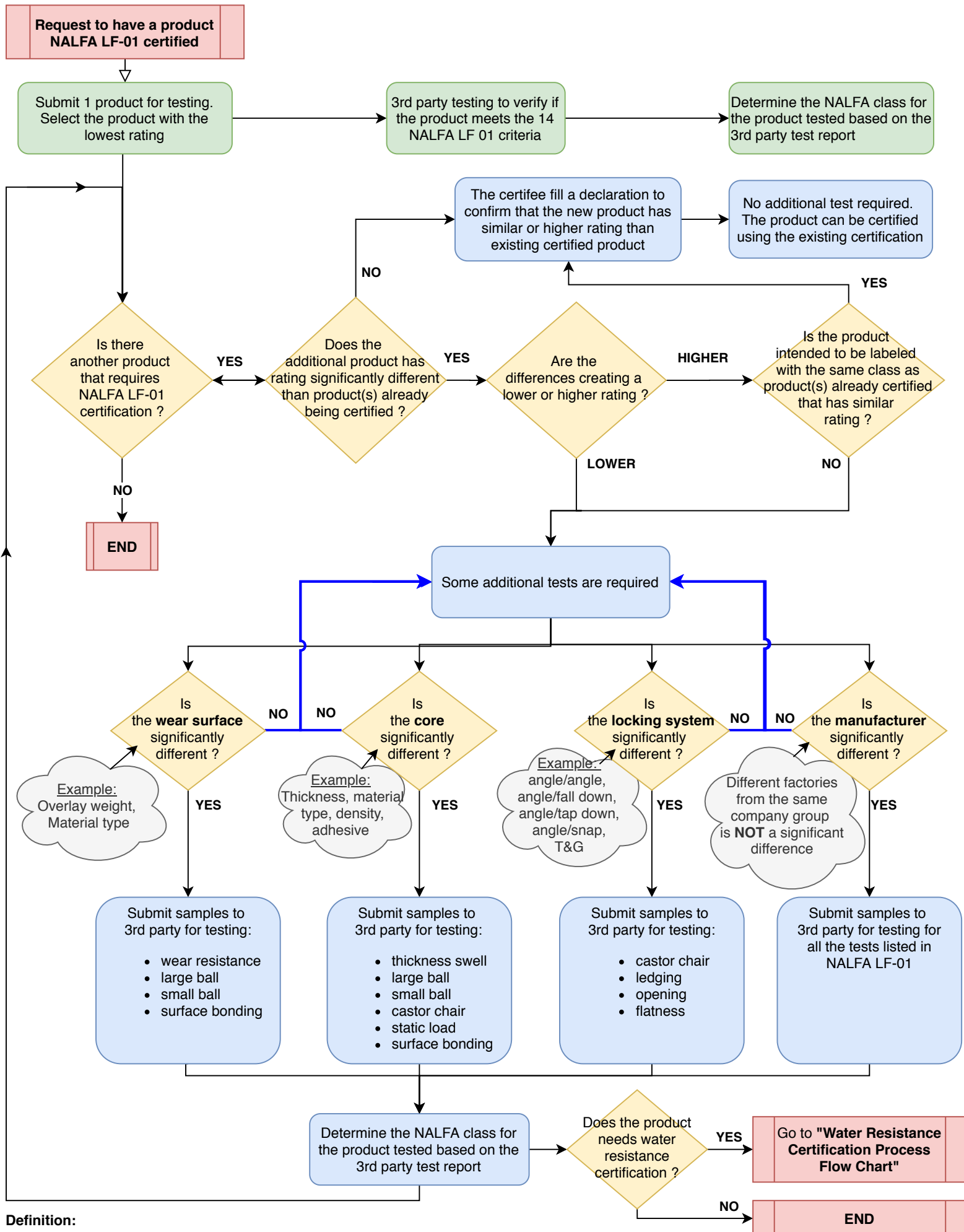
The purpose of the NALFA LF-01 standard is to provide a tiered, minimum performance set of requirements for laminate flooring using standard test methods. The product certification matrices included in this document are provided to be a guide for manufacturers pursuing certification of multiple laminate flooring products in order to avoid testing redundancy. Additionally, included in this document is the NALFA Surface Swell certification matrix for a manufacturer wishing to pursue such certification upon passed LF-01 test requirements.

Below you can find the performance criteria for the NALFA Surface Swell test method.

NALFA Surface Swell Criteria		
Value	Units	Minimum Performance
<i>Recovered Qualitative Rating</i>	1-5	≤ 2
<i>Measured Recovered Average</i>	mm	≤ 0.3
*Minimum performance values only based on points 2-4 (P2-4)		

Please contact admin@nalfa.com for any questions or concerns.

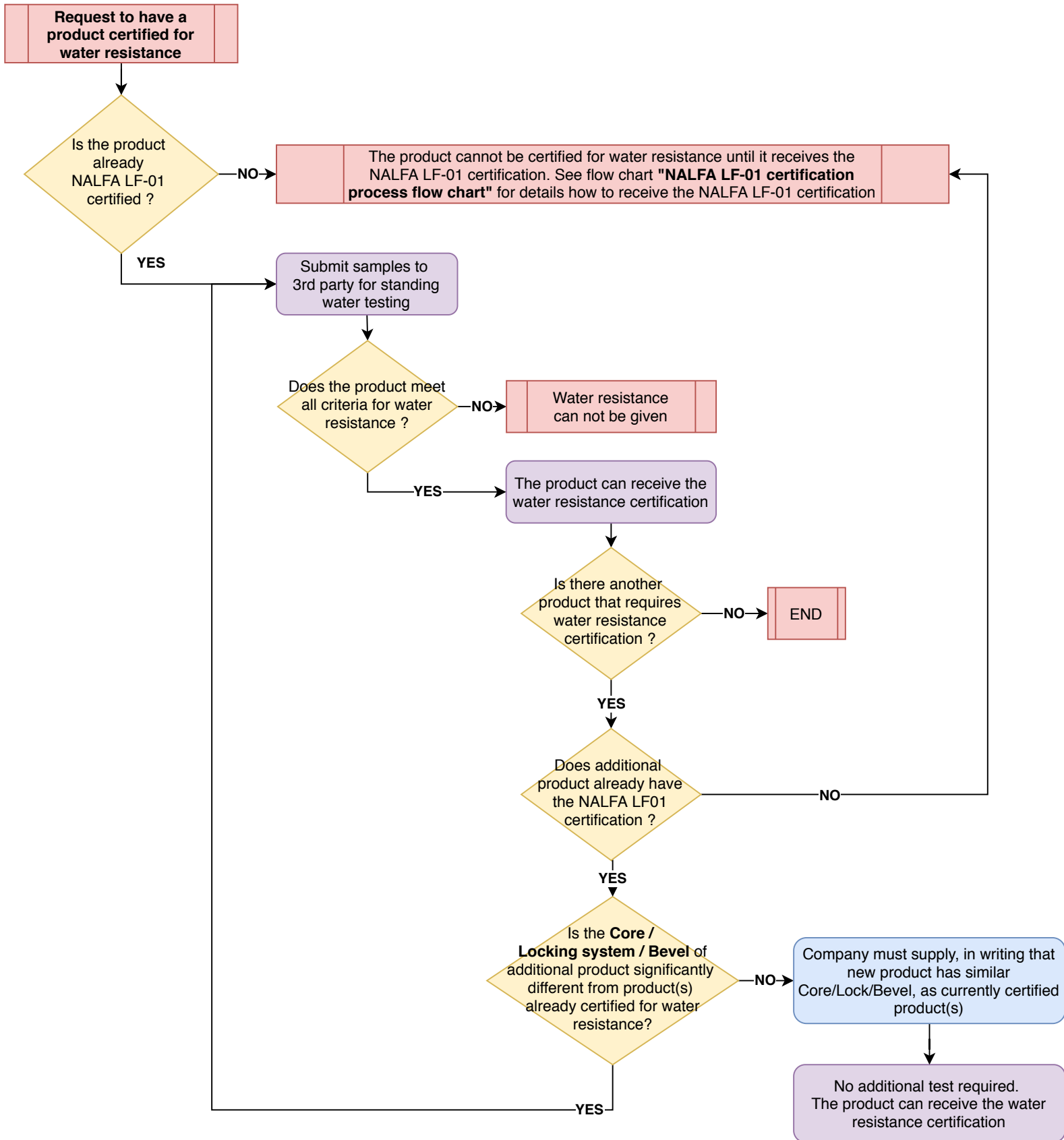
NALFA -LF-01 CERTIFICATION PROCESS FLOW CHART



Definition:

- **Class of use:** Residential, Light commercial, Commercial, Heavy commercial
- **Lowest rating:** for example: lowest wear resistance, thinnest product, lowest water resistance, lowest density,
- **Significant:** it is the responsibility of the certifier to define what is considered a significant change.

WATER RESISTANCE CERTIFICATION PROCESS FLOW CHART



Level of difference expected to potentially test:

- **Core:** nominal thickness difference, density,
- **Locking system:** angle/angle, angle/fold down, angle/tap down, angle/snap, T&G
- **Bevel:** square edge, V groove bevel, Pillow bevel